

PENTATONIC SCALE LICKS

Darren Lloyd

Pentatonic scale



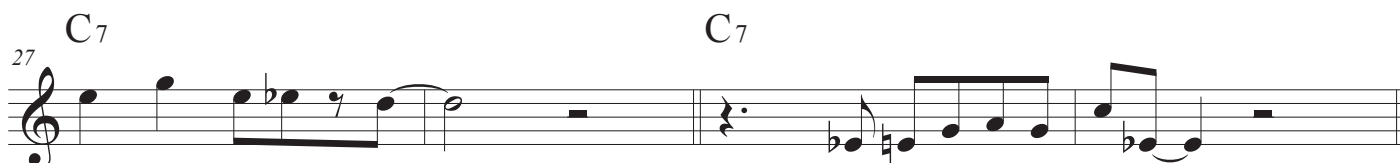
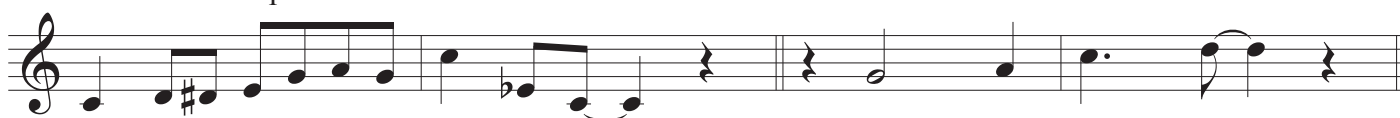
Relative minor pentatonic



Change to the blues scale (add the b5)



Use that scale for major pentatonic, giving us the minor or b 3rd!

① C₇ Two bar pentatonic licks!C₇

$$\textcircled{2} \quad \mathbf{F}_7$$
F₇[illegible]

③ G_7

G₇

The first staff of music is written on a treble clef. It begins with a quarter note on G4, followed by an eighth note on A4 and a beamed eighth note on B4. This is followed by a quarter note on C5, then a quarter note on B4, and a quarter note on A4. The next measure contains a quarter note on G4, a quarter note on F4, and a quarter note on E4. The final measure of the staff contains a quarter note on D4, a quarter note on C4, and a quarter note on B3.

55 **G7** **G7**

The musical notation for measures 55-58 is as follows:

- Measure 55:** Treble clef, G4 quarter note, A4 quarter note, B4 quarter note, C5 quarter note, B4 quarter note, A4 quarter note, G4 quarter note.
- Measure 56:** Treble clef, G4 quarter note, A4 quarter note, B4 quarter note, C5 quarter note, B4 quarter note, A4 quarter note, G4 quarter note.
- Measure 57:** Treble clef, G4 quarter note, A4 quarter note, B4 quarter note, C5 quarter note, B4 quarter note, A4 quarter note, G4 quarter note.
- Measure 58:** Treble clef, G4 quarter note, A4 quarter note, B4 quarter note, C5 quarter note, B4 quarter note, A4 quarter note, G4 quarter note.

59 G7 G7



Measure 59: Treble clef, G4 quarter, A4 quarter, Bb4 quarter, A4 quarter, G4 half. Measure 60: Treble clef, G4 quarter, F#4 quarter, E4 quarter, D4 quarter, C4 half. A double bar line is between measures 59 and 60.

PENTATONIC SCALE LICKS

4

C₇

C₇

3

67

F₇

C₇

71

G₇

F₇

C₇

5

C₇

79

F₇

C₇

83

G₇

F₇

C₇

6

C₇

91

F₇

C₇

95

G₇

F₇

C₇